

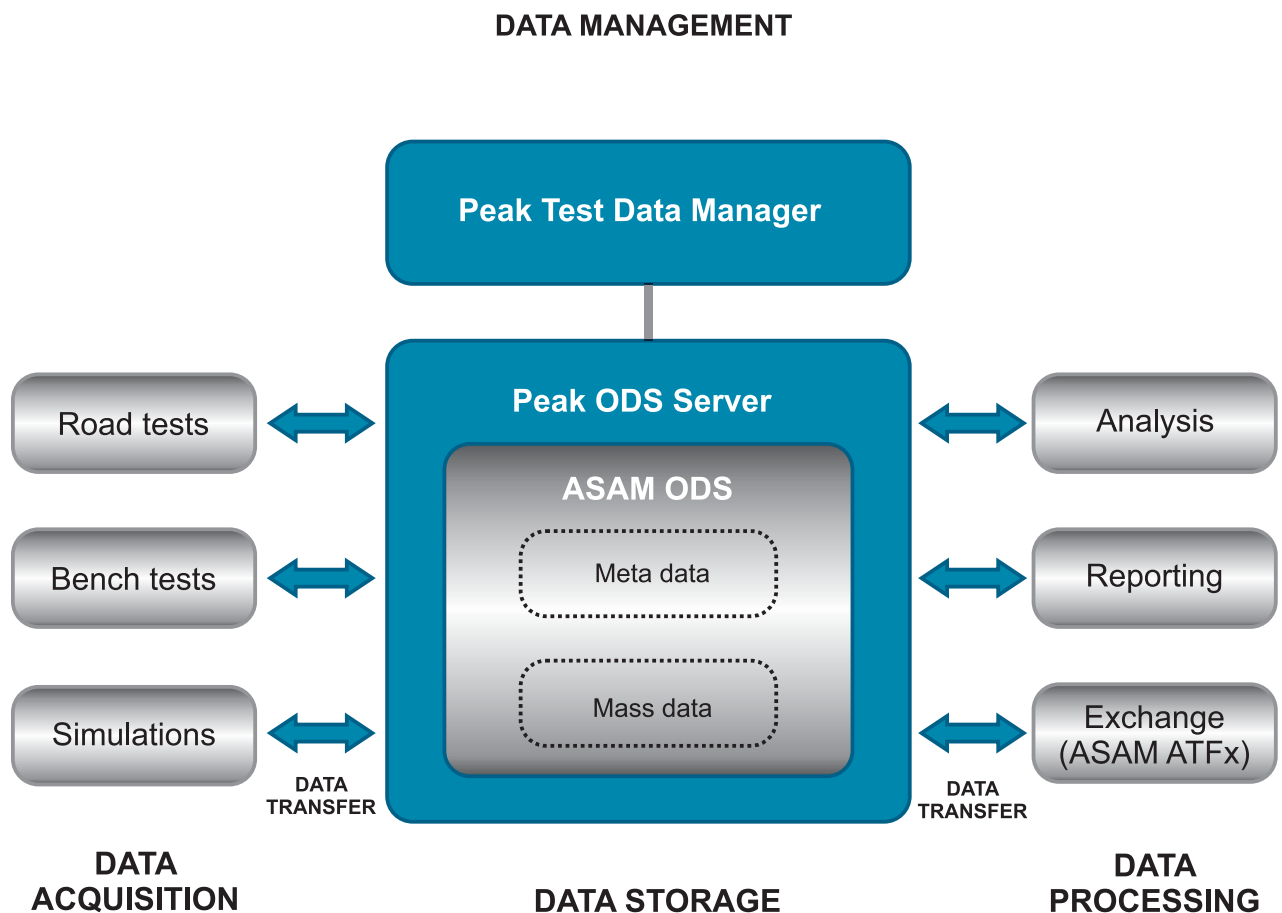
Maximize the value of your test data



PEAK TEST DATA MANAGER

PEAK TEST DATA MANAGER

Peak Test Data Manager (PeakTDM) is an open software platform for storing and managing measurement data from different measurement and automation systems consistently. The standard ASAM ODS serves as a system-neutral data hub. Entitled users can define application-specific data models, which allow the management of test data from a variety of test domains. Due to the systematic and comprehensive documentation of the entire test context (= meta data), your test engineers can easily find and correctly interpret all measurements in the long term. Powerful navigation and search functions support them exploring the data in a variety of ways. Various analysis tools can be flexibly integrated into the application. As a result, you do not run the risk of an unwanted vendor-lock-in. Big Data extensions enable you to perform scalable analytics using new technologies for distributed data processing, advanced visualization, data mining and machine learning.





Your benefits at a glance:

- Central management of measured data from different measuring systems
- System-neutral data storage based on ASAM ODS
- Import and export of a variety of data formats
- Clear interpretation of the measured data in the long-term
- Uniform and comprehensive documentation of the test context
- Fulfillment of proof obligations according to legal requirements
- Standardized interface for data access
- Vendor-neutral data exchange format based on ATFx
- Integration of various analysis and reporting tools
- Powerful features for data exploration
- Scalable application design for global access to test data
- Big Data extensions for scalable analytics
- Implementation of integrated tool chains
- Extensive security capabilities for data protection
- Tools for the administration, operation and safeguarding of the system
- Avoidance of an unwanted vendor-lock-in



ASAM ODS - Standardized storage of test data

PeakTDM leverages ASAM ODS (www.asam.net) for the persistent storage and retrieval of test data. The standard is widely used by automotive manufacturers and suppliers across Europe, North America and Asia. The major strength of ODS - as compared to proprietary storage solutions - is that data access is independent from the specific tools of certain vendors. At the same time, the standard enables a well-defined, system-independent and comprehensive documentation of your test data.

Based on the vendor-neutral data exchange format ATFx it is possible to exchange measurement data together with its descriptive information between different measurement and analysis systems.

Various security mechanisms in ODS ensure the protection of your data against unauthorized access. Together with the capability of archiving test data in the long term, OEMs and legal institutions accept ASAM ODS as a basis for the fulfillment of proof obligations in accordance with legal requirements.

Peak ODS Server - Enterprise-wide fusion of test data

In the context of comprehensive data management systems, **Peak ODS Server (PODS)** acts as a data fusion center by providing a standardized interface for storing and accessing test data independently of their origin.

Concerning the number of users, data volume and spatial distribution, PODS is gradually scalable. Due to its modern application design, the server can manage small as well as large quantities of data with great performance in local applications or across different sites, regardless of the number of users.

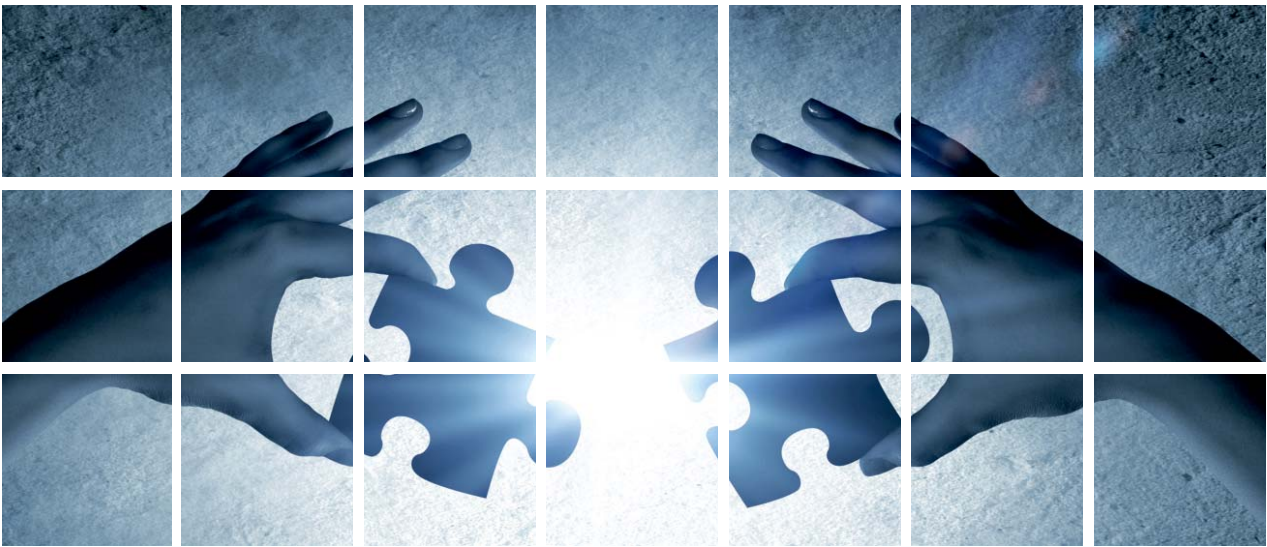
A series of additional tools complete the PODS. They facilitate the administration, operation and safeguarding of your system.



Peak Data Transfer Tool - Connecting various data sources

Peak Data Transfer Tool (PeakDTT) converts measurement data and meta data of various data sources into a defined data target. The tool provides plugins for a variety of data formats. Users can add additional plugins for application specific source and target formats at any time.

By means of configuration, it is e.g. possible to map different data structures of the connected source systems to a uniform ODS application model. In this way, users can implement a standardized test data hub for various measuring and analysis systems.



PeakTDM Client - An Integrated working place for your tool chain

The versatile features of the **PeakTDM Client** support users efficiently in carrying out the individual work steps in the test process.

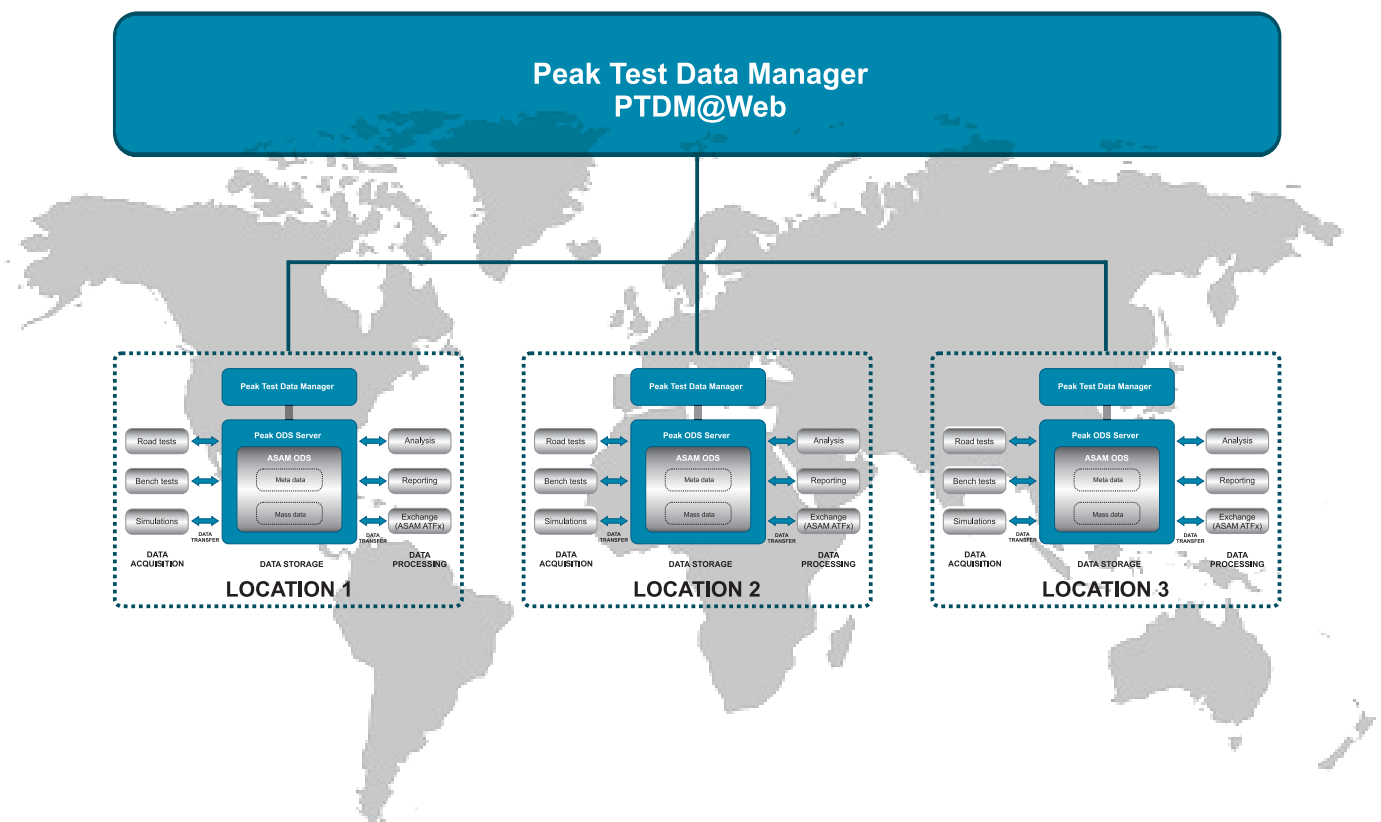
The center of the application are powerful navigation and search capabilities, which help users finding the data they need quickly. They can browse the database using a configurable tree view or define and execute meta data based search queries.

A full text search allows users to find measurements with arbitrary search terms, without knowing the exact meta data structures. To gain information directly from measurement channels, they can use the Advanced Search or Similarity Search in addition.

For the further processing of the search results a variety of options are available. Examples include exporting the data to a defined file format (e.g. ATFx) for sharing them with colleagues, partners, customers or suppliers, as well as transferring them to connected systems for post-processing or analysis purposes.

PeakTDM@Web - Global access to test data

The modern multi-layer architecture of **PTDM@Web** allows the connection of multiple data sources via so-called Data Access Modules, hosted at different locations. By means of a user-friendly web client, the users can navigate and search in the selected data stock. Thus, PTDM@Web provides a flexible and scalable basis for implementing global data management solutions across sites.



Peak Test Management Suite - Transparency about the entire test activities

You can use PeakTDM as an integral part of **Peak Test Management Suite (PeakTMS)**, which provides software functions for the planning and controlling of test processes. The solution manages all test requests and test orders centrally. Test orders will be transferred to PeakTDM. They contain the descriptive information for the test execution and ensure the systematic documentation of the measurements. Test results can be transferred back to PeakTMS.

The exchange of data between the PeakTMS and possibly several, spatial distributed instances of the PeakTDM allows you to implement global, cross-domain systems for test and measurement data management.



PeakBig Data Extensions - A basis for scalable analytics

With the **Peak Big Data Extensions (PeakBDE)**, Peak Solution provides ASAM ODS compliant software components, which are suited for storing, accessing and processing huge amounts of test data within a Hadoop environment. This opens up a wide range of possibilities for you, concerning the standardized implementation of high performance architectures and scalable analytics using new technologies for distributed data processing, data mining, advanced visualization and machine learning.

About Peak Solution

Peak Solution is a leading provider of software solutions for automotive testing. Our solutions allow complex test processes to be transparently organized and efficiently managed. Automobile manufacturers and suppliers use our tools for conflict-free test planning, global controlling of test tasks and standardized storage of measurement data. The applications are based on state-of-the-art information technology, open industry standards and powerful product platforms. Peak Solution is an active member of ASAM e.V. and the Eclipse openMDM® Working Group, where we have been responsible for the international standardization of data formats, interfaces and software frameworks for many years. Peak Solution's headquarter is located in Nuremberg, Germany. From here, we conduct our international operations. A subsidiary in Shanghai and local partner in Japan and USA guarantee the necessary proximity to our customers outside of Europe.

Peak Solution GmbH

Lina-Ammon-Straße 22 | 90471 Nürnberg | Deutschland
T +49 911 800927-0 | F +49 911 800 927-99 | info@peak-solution.de

Brühlerwallstrasse 9 | 99084 Erfurt | Deutschland
T +49 911 800927-0 | F +49 911 800 927-99 | info@peak-solution.de

Peak Solution AG

Wasserwerkgassee 2 | 3011 Bern | Schweiz
T +41 78 7889905 | info@peak-solution.ch | www.peak-solution.ch

Peak Solution Information Technology Co., Ltd.

Room 1201 | 518 An Yuan Road | Putuo District | 200060 Shanghai | China
T +86 21 52048091 | shanghai@peak-solution.com

No. 99 Shimao Tower | Mengzhuiwan Hengjie | Chenghua District |
610056 Chengdu, Sichuan | China
T +86 28 69864965 | chengdu@peak-solution.com

www.peak-solution.de

